

大宅門寫意 - 蘆溝曉月

高胡

趙季平

慢板 $\text{♩} = 56$

10 *mf*

14

18

22

26 $\text{♩} = 48$
6 19 *f*

53 行板 $\text{♩} = 63$
20 *mf* *f*

76 $\text{♩} = 144$
快板 4

83



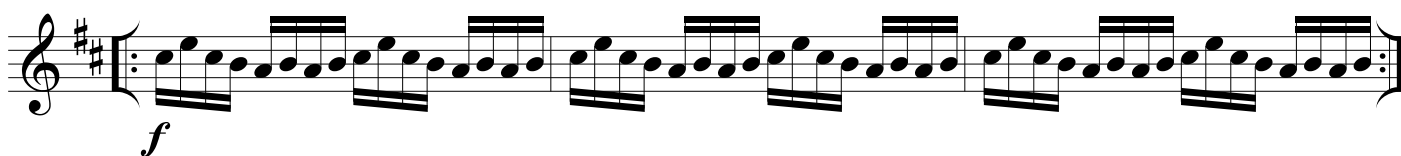
86



89



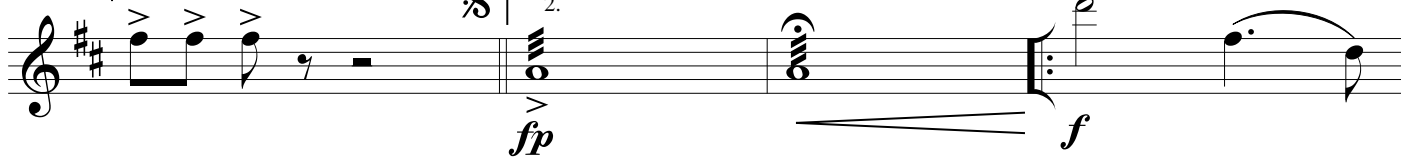
91



94



97



廣板 ♩ = 48

101



105

