

十面埋伏

二胡

劉文金 趙咏山 編

【一】列營

1 威武地

5

9

rit. 慢

2 由慢渐快 行板

13

18

23

稍穩

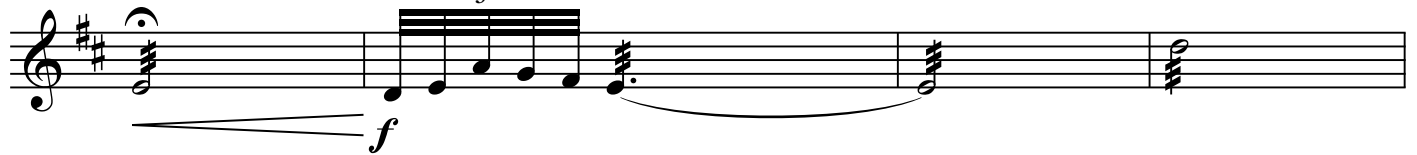
3 行板 由慢渐快

28

32



36



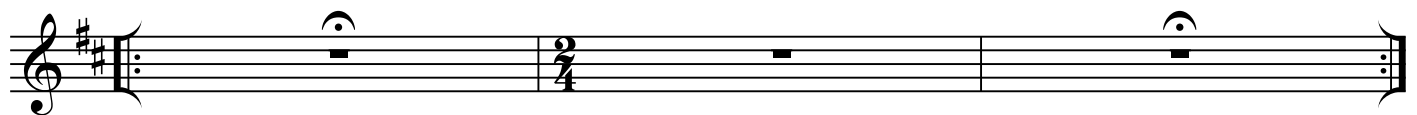
40



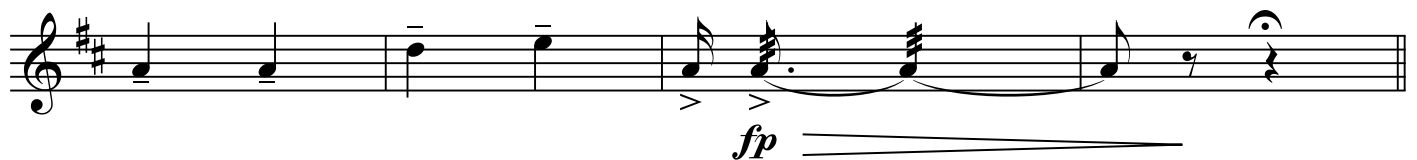
44

4

由慢漸快



47



51

1

【二】吹打

自由

3

中速



58



63

內 內

2

5



72 **3**

mp

76

mf

80 **4**

mf

84

88

92

rit.

1 **【三】埋伏**

96

由慢渐快 小快板 稍渐慢

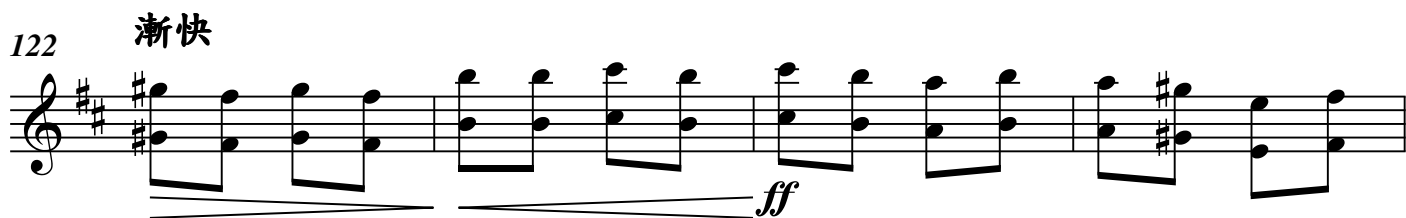
4 14 2

sff \curvearrowright *p*

118 **2** 稍慢些的小快板

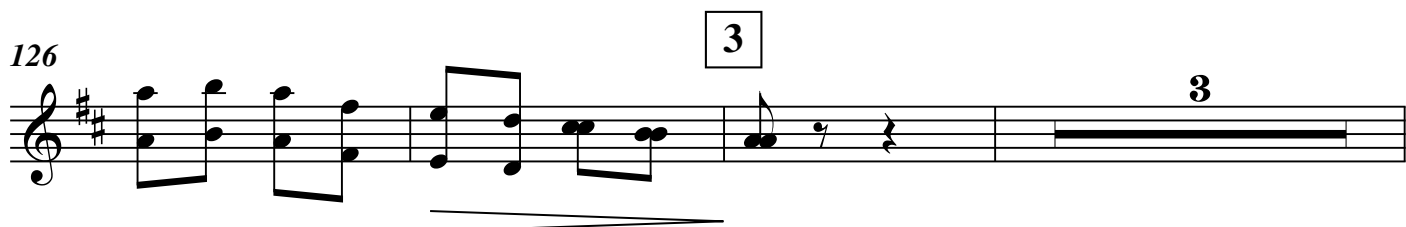
mf \curvearrowright *f*

122 渐快



ff

126



ff

132

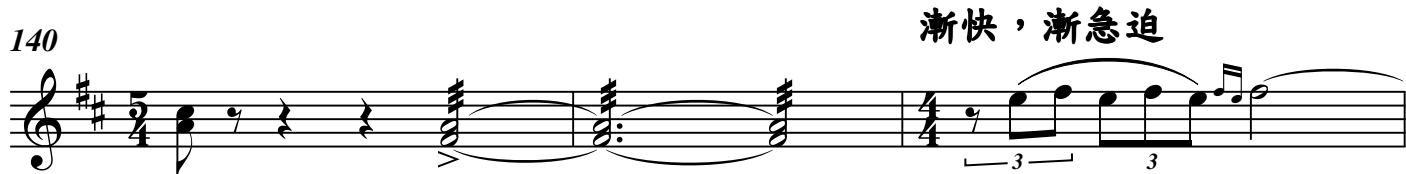


136 *rit.* 稍慢，較自由 4




ff

140 渐快，渐急迫



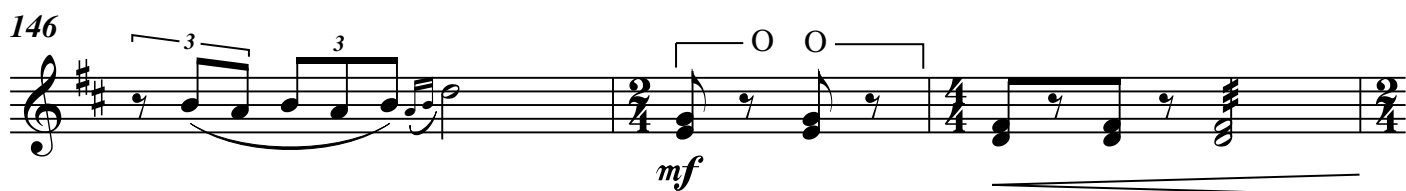
ff

143



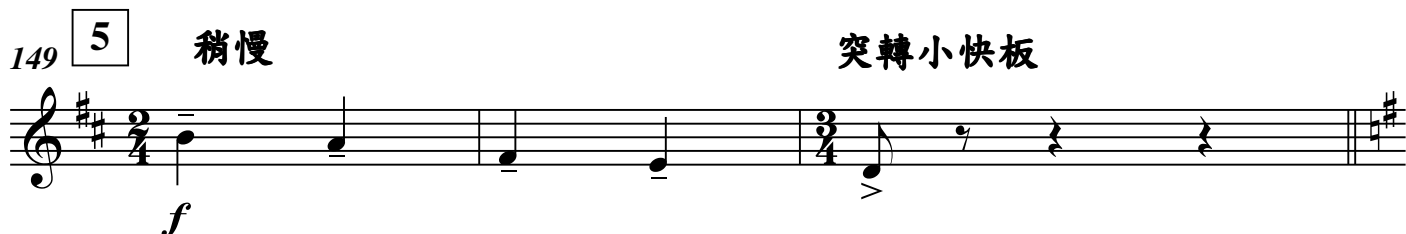
mf

146



mf

149 5 稍慢 突轉小快板



f

【四】小戰

152 **1** 快板

156

160 **2**

164

168 rit.

172 **3** 中速

176 楚歌

182 **【五】大戰**

1 由慢漸快

自由

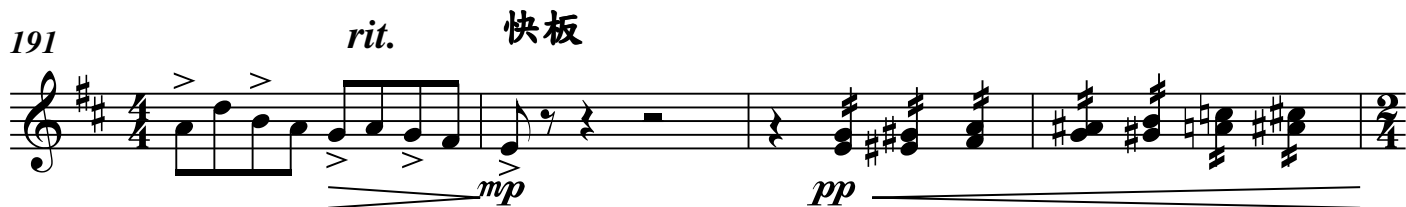
187



ff

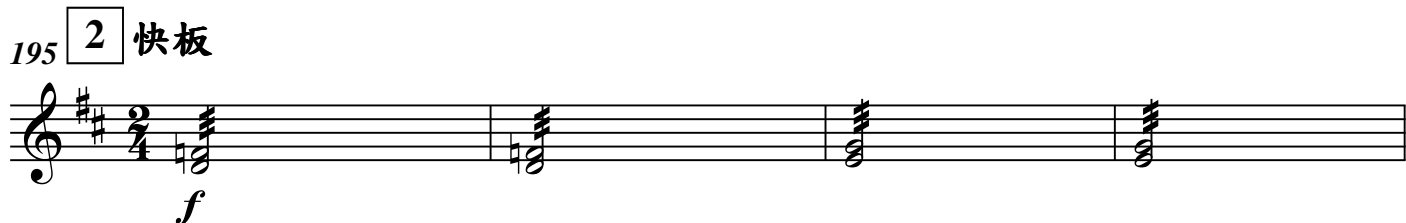
191

rit. 快板



mp *pp*

195 2 快板

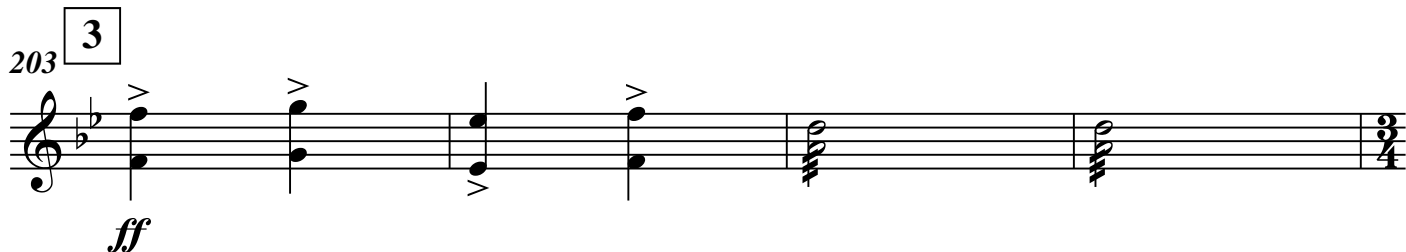


f

199

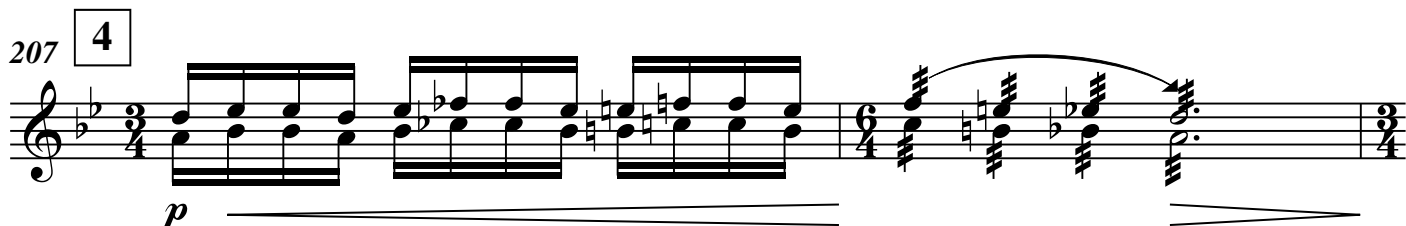


203 3



ff

207 4

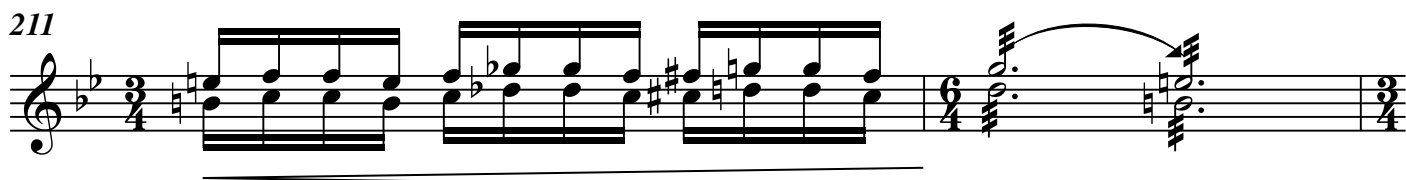


p

209



211



213

215

5

稍穩，漸慢

原速

218

221

6

mp

225

229

7

231

233

235

237 8

240a 240b 240c 241

242

rit.

247 9 快速

250

253

rit. 更慢些

258

【六】烏江

263 1 中速，稍慢

270 2 漸快

273 3

276 4 div.

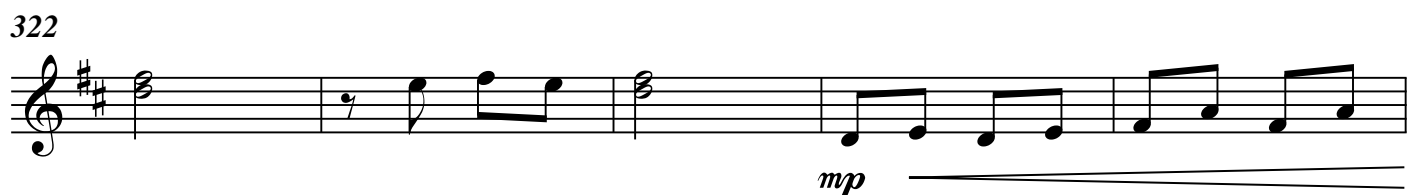
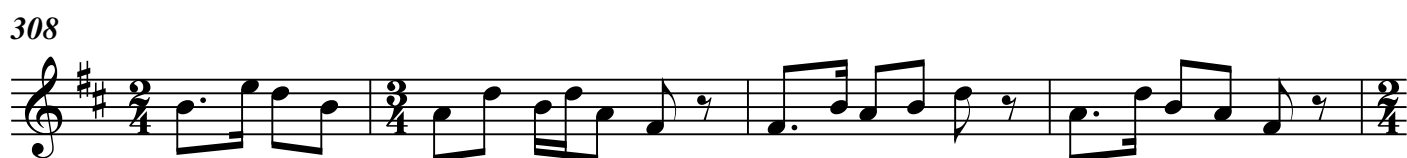
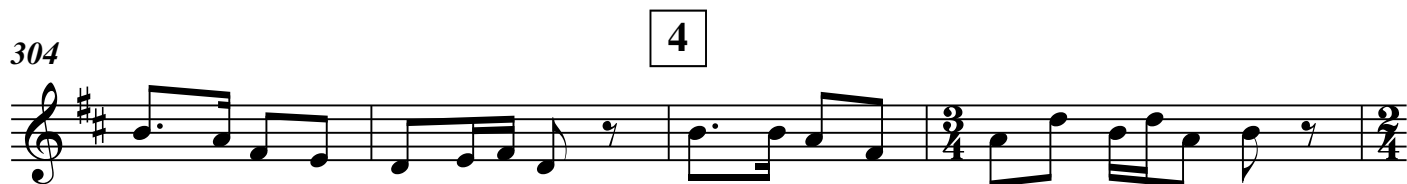
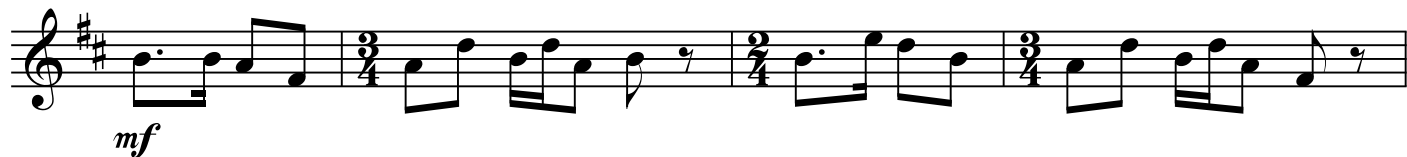
280 5 rit.

【七】奏凱

286 中速

290 1 ♩ = 48

295 2 稍快 ♩ = 132



331

mp

Musical notation for measure 331, starting with a treble clef and a key signature of one sharp (F#). The time signature changes from 3/4 to 2/4 and back to 3/4. The measure begins with a *mp* dynamic marking and a slur over the first two notes.

335

mf

Musical notation for measure 335, continuing in the same key signature. The time signature is 2/4. The measure ends with a *mf* dynamic marking and a hairpin indicating a decrease in volume.

340

f p

Musical notation for measure 340, continuing in the same key signature. The time signature is 2/4. The measure begins with a *f* dynamic marking and a *p* dynamic marking later in the measure.

345

rit. f

Musical notation for measure 345, continuing in the same key signature. The time signature is 2/4. The measure includes a *rit.* (ritardando) marking and a *f* dynamic marking. It ends with a hairpin indicating a decrease in volume.

351 放寬 ♩ = 48

ff

Musical notation for measure 351, continuing in the same key signature. The time signature is 2/4. The measure begins with a *ff* dynamic marking and includes the instruction "放寬" (放宽) and "♩ = 48".

356

Musical notation for measure 356, continuing in the same key signature. The time signature is 2/4. The measure features a long slur over the notes.

361

Musical notation for measure 361, continuing in the same key signature. The time signature is 2/4. The measure includes a slur and two triplet markings (3).

366

放慢

Musical notation for measure 366, continuing in the same key signature. The time signature is 2/4. The measure includes two triplet markings (3) and the instruction "放慢" (放慢). It ends with a hairpin indicating a decrease in volume.