

唐響  
(中級)

夢 ♩ = 62 ca. 稍自由  
("唏!" 氣聲叫一聲)

Musical notation for measures 1-5, bass clef, 4/4 time signature. Dynamic markings *fff* and *pp* are present.

Musical notation for measures 6-11, bass clef, 4/4 time signature.

Musical notation for measures 12-17, bass clef, 4/4 time signature.

Musical notation for measures 18-24, bass clef, 4/4 time signature. Ends with *pizz.* and *p*.

Musical notation for measures 25-28, bass clef, changing time signatures: 3/4, 4/4, 3/4, 4/4, 3/4.

Musical notation for measures 29-32, bass clef, changing time signatures: 3/4, 4/4, 3/4, 4/4, 3/4.

Musical notation for measures 33-36, bass clef, 3/4 time signature. Includes (高胡) and treble clef.

Musical notation for measures 37-40, treble clef, 3/4 time signature.

40

*pizz.*  
*mp* *mf*

44

48

*f*

52

*mf* *f*

55

*mp*

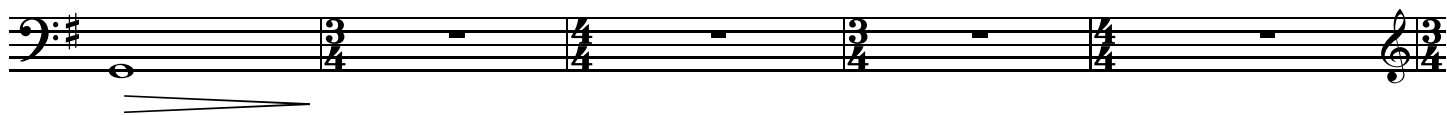
59

63

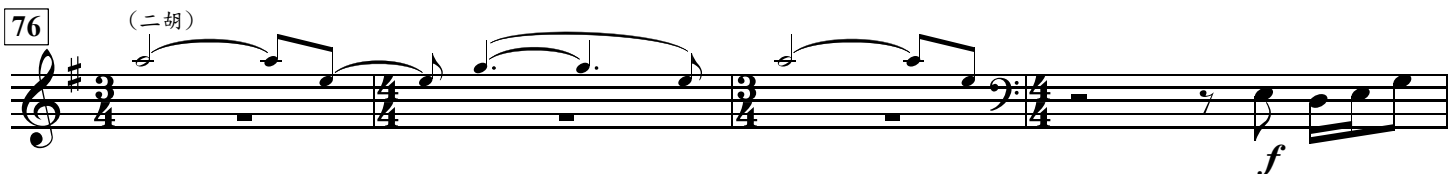
*mf*

67

71



76



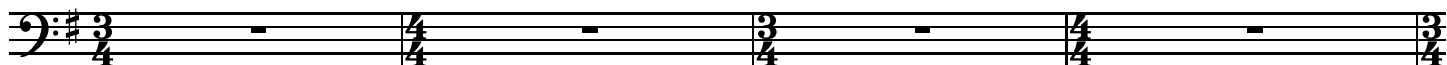
80



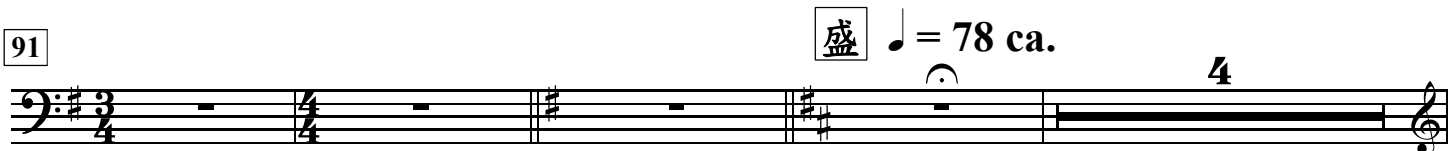
83



87



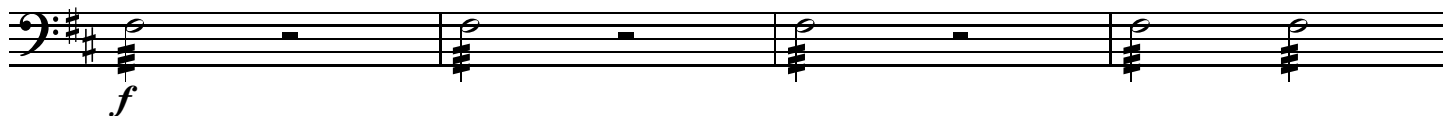
91



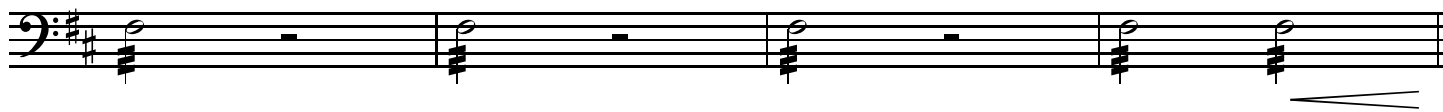
99



103



107



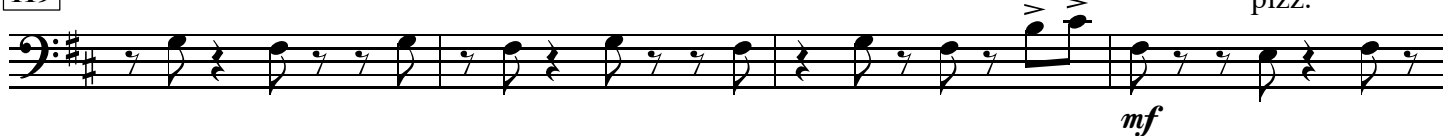
111 ♩ = 156 ca.



115



119



123



127



131



135



170



174



178



182



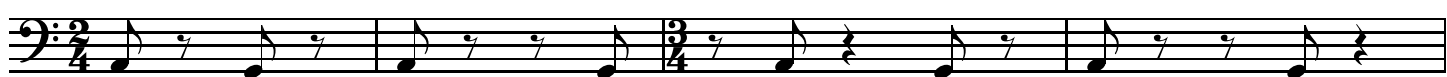
186



190



194



198



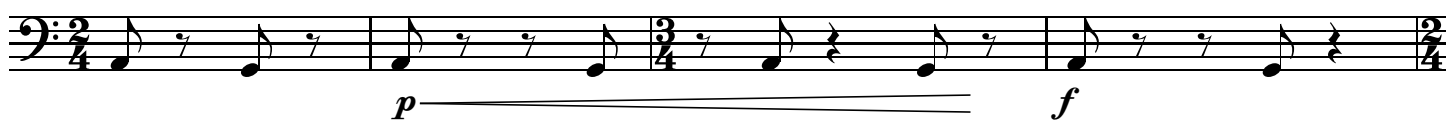
202



207



212



216



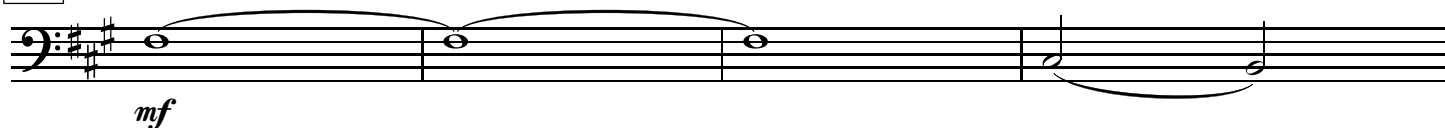
220



224



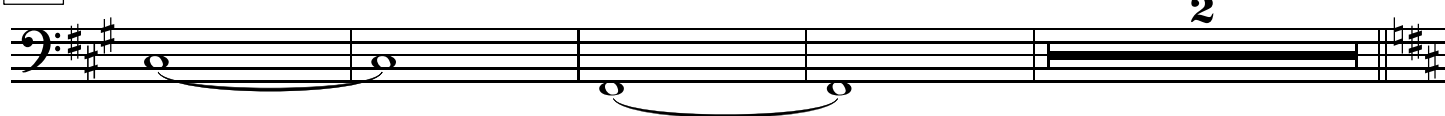
240



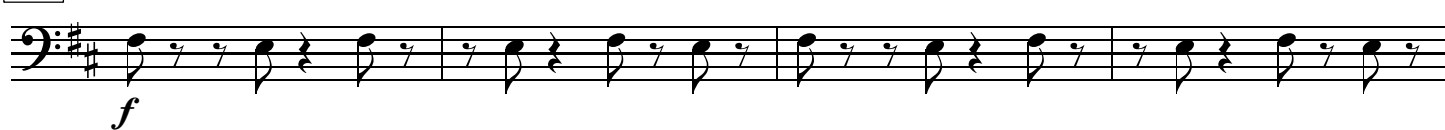
244



248



254



258



262



266



270



274



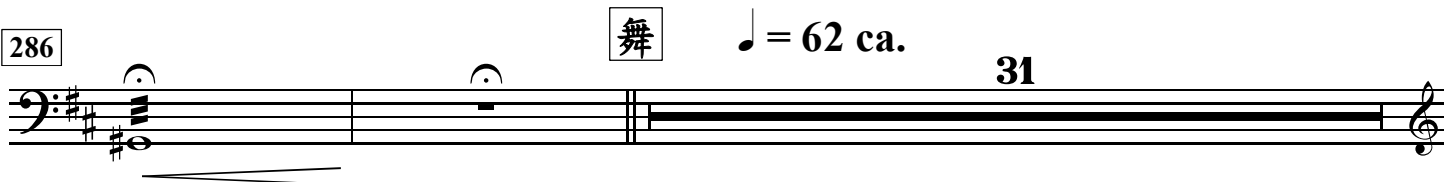
278



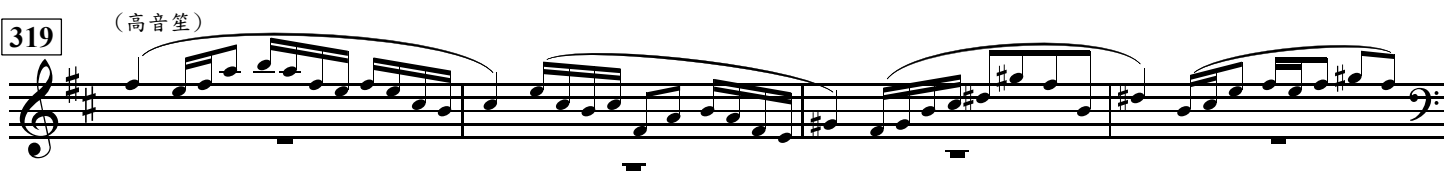
282



286



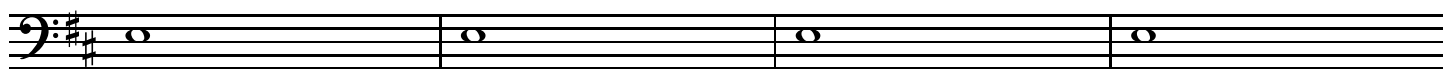
319



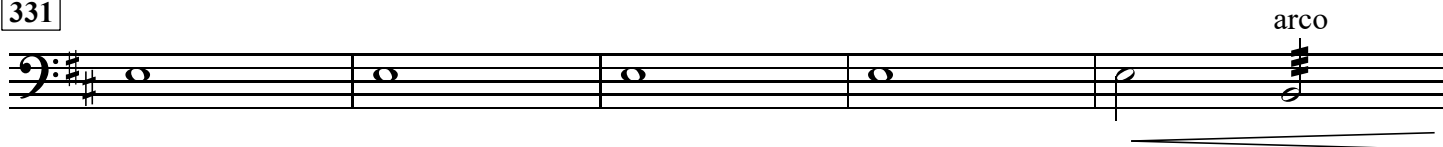
323 pizz.



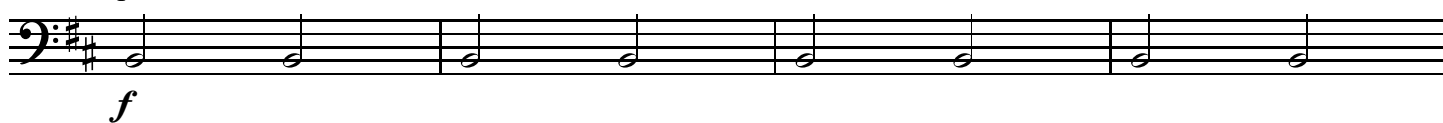
327



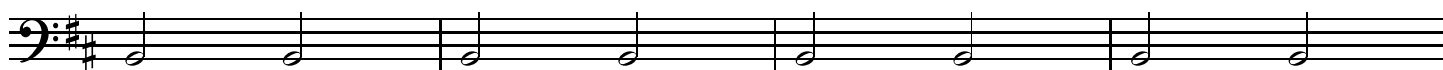
331



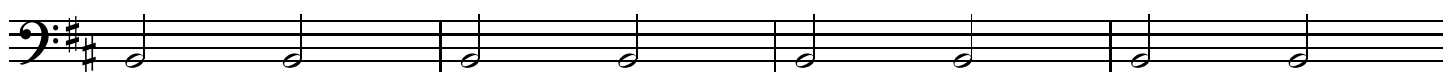
336 pizz.



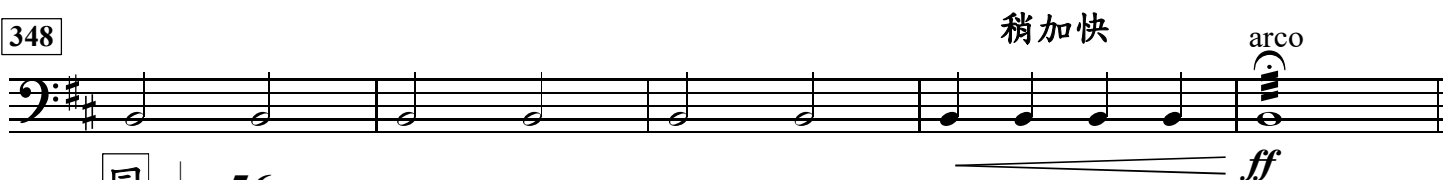
340



344

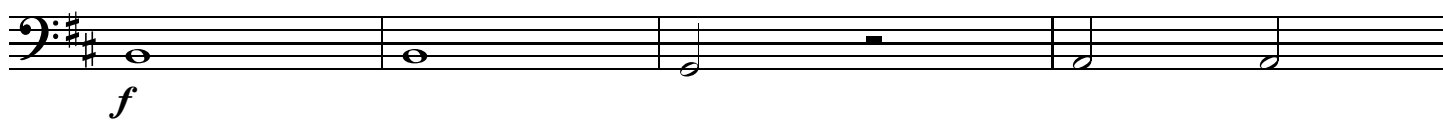


348

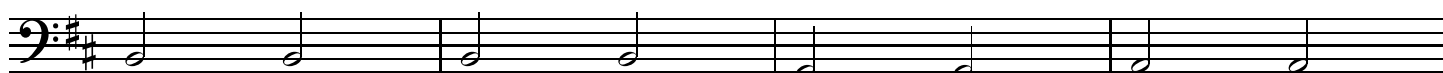


同 ♩ = 56 ca.

353 pizz.



357 稍加快



361 ♩ = 66 ca. arco



363





365 ♩ = 69 ca.



367



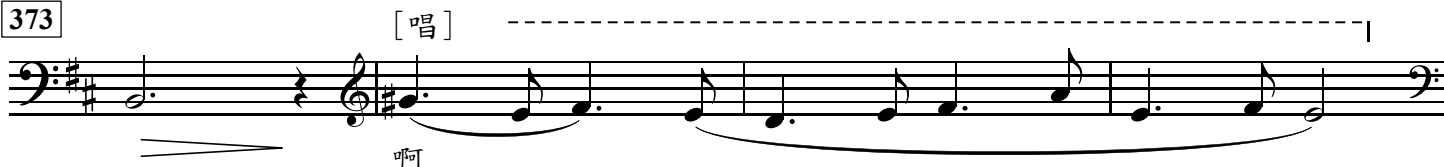
369



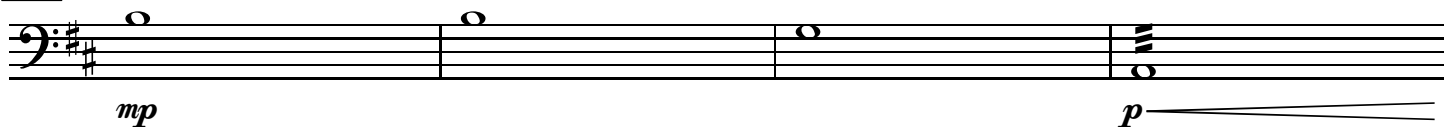
371



373



377



381



383



385



387



稍慢

389

